

Restorations that cross generations



NEW

Building on the success of EQUIA Forte®, the new EQUIA Forte® HT is a long-term bulk fill restorative system with enhanced mechanical properties, sound marginal seal and excellent handling. This makes EQUIA Forte® HT a versatile and durable* restorative solution, ideal for patients of all ages, including paediatric, geriatric and high-risk caries patients.

EQUIA Forte® HT

Bulk fill glass hybrid restorative system



EQUIA Forte® Coat Bottle Refill

Contains: One EQUIA Forte® Coat (4mL) bottle.



EQUIA Forte® HT Fil Refill

Contains: 50 EQUIA Forte® HT Capsules (Powder 0.4g, Liquid: 0.13g (0.10mL) per capsule).
Shades: Assorted, A1, A2, A3, A3.5, B1, B2, B3, C4





EQUIA Forte® HT - the new EQUIA Forte® upgrade

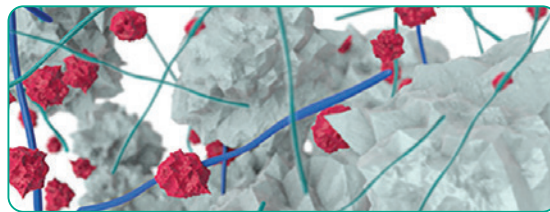


Since 1921
Towards Century of Health

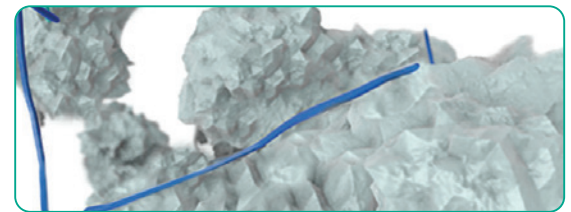
Glass hybrid technology

EQUIA® was first launched in 2007, and numerous clinical studies have demonstrated its clinical success. In 2014, GC's new glass hybrid technology caused further considerable improvements, leading to the development of EQUIA Forte®. This restorative system combined a self-cure, bulk fill restorative, EQUIA Forte® Fil, laminated with a nano-filled, self-adhesive resin coat, EQUIA Forte® Coat. The new glass hybrid innovation was achieved through introduction of ultra-fine highly reactive glass and highmolecular weight polyacrylic acid powders within conventional glass which ensures advanced mechanical properties with improved flow and non-sticky handling. The nano-filled, self-adhesive resin, EQUIA Forte® Coat, ensures optimised marginal seal and wear resistance.

-  Surface-treated FAS (Fluoro Aluminio Silicate) glass
-  Highly reactive surface-treated fine FAS glass
-  High-molecular-weight polyacrylic acid
-  Polyacrylic acid



EQUIA Forte® Fil and EQUIA Forte® HT Fil
advanced glass hybrid technology



EQUIA® Fil

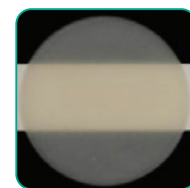
Taking glass hybrid to the next level

The strength and handling are further improved in EQUIA Forte® HT by developing an intelligent control of distribution and interaction of these glass particles. Also, EQUIA Forte® Coat is now available in an ergonomic flip-top bottle that minimises waste. The result? A strong restorative with prolonged working time and superb handling that is excellent for bulk-fill placement.

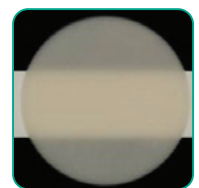


Improved translucency

Pushing the boundaries of glass hybrid technology even further, EQUIA Forte® HT has a perfectly adapted translucency for better looking posterior restorations. The refractive index of the fillers has been adapted to the matrix. As a result, the final restorations look more natural and aesthetic.



EQUIA Forte®
HT Fil
Shade A2



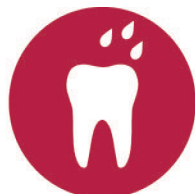
EQUIA Forte® Fil
Shade A2

Strong & durable*

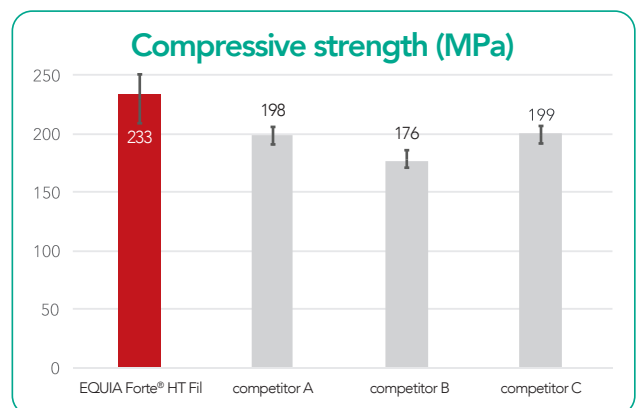
Glass hybrid systems offer the strength of the latest innovative glasses combined with the wear resistance of a filled coating. The unique synergy between the coating and the restorative material improves the durability and wear resistance of the restorations.



True bulk-fill



Moisture-tolerant



ISO9917-1: 2007.
Source: GC R&D, Japan, 2018. Data on file.

*Basso et al. 7 Years, Multicentre, Clinical Evaluation on 154 Permanent Restorations Made With a Glassionomer-based Restorative System. J Dent Res. 2016;95 Spec Issue B: #0446.